

Pick Entry

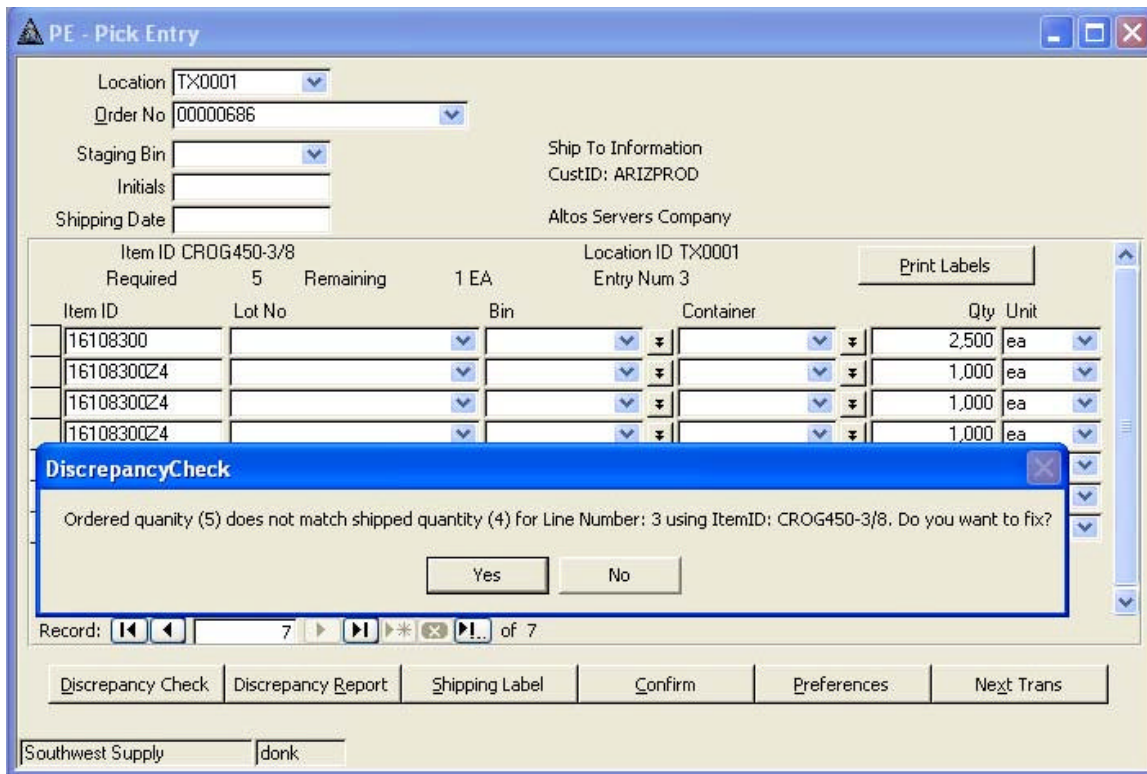


The **Intrust Win Pick Entry** application adds a new dimension to your order verification and shipping process.

- The verification of the picked order is made against the order in memory so that overpicks, underpicks, and invalid picks are caught and identified while the order is being verified. This speeds up the verification process and virtually eliminates mis-shipments.
- Verification is done in the warehouse as opposed to the back office allowing corrective action to be taken immediately.
- Line item labels can be produced during this process as opposed to a separate step.
- Order shipping labels can be produced during this process as opposed to a separate step.
- At the conclusion of the verification, a Pack List and/or an Invoice may be printed.
- As an option, the sales order can be verified as a by-product of the Pick Entry process and thereby eliminating a step in the back office.

Bar coding is used extensively with Pick Entry, including the bar coding of the products in the warehouse and the bar coding of the Pick Ticket number. Inexpensive hand-held scanners are used to scan the Pick Ticket number which brings the Pick Ticket information into memory and the picked items are scanned and compared to the product IDs and quantities on the Pick Ticket. It is this comparison that identifies errors made in the picking process.

Intrust Win Pick Entry provides you a means of improving the efficiency of your order verification process and at the same time controlling mis-shipments.



The Pick Entry form showing one of the messages warning of a possible short ship condition.