

Supply Chain - Warehouse Management

NewVision Warehouse Management includes a comprehensive suite of functions that work together to improve the overall efficiency of your warehouse operations. This functionality consists of the three following components:

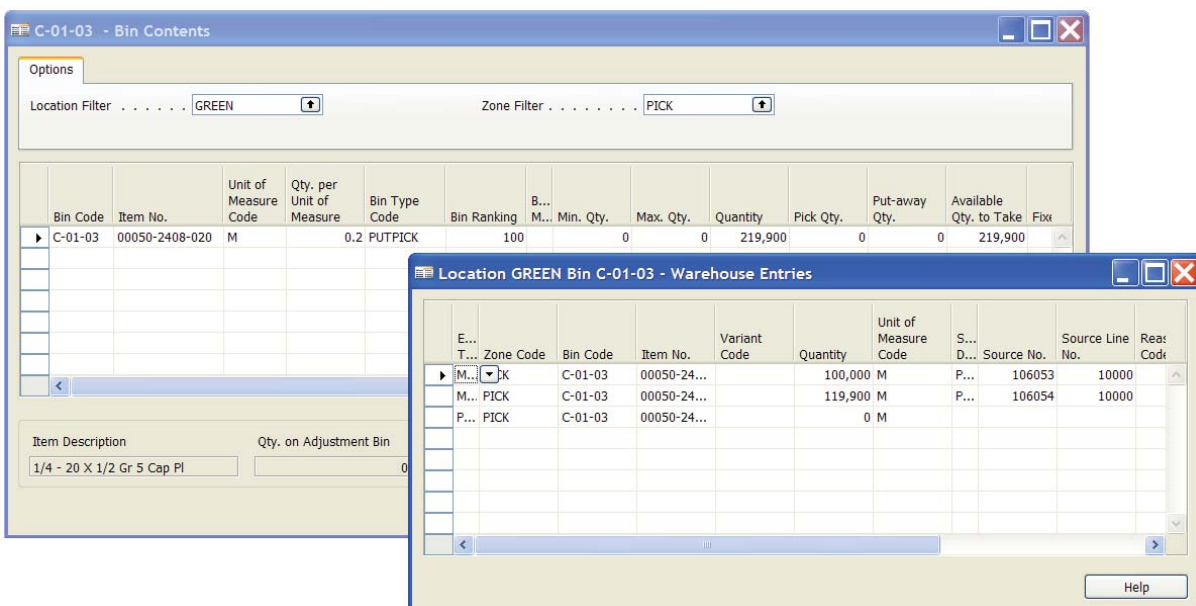
- Warehouse Management System
- Warehouse Activity
- Cycle Counting

Warehouse Management

The Warehouse Management system provides a structure with which to organize your warehouse in logical zones and bins within those zones. Each zone can support an unlimited number of bins. The flexibility of the bin system includes the following:

- The system supports both fixed and floating bins.
- Put-away templates define the put-away criteria and can be designed to suit different needs. Further flexibility is provided by templates related to individual inventory items.
- Bin types define how the bins are to be used, e.g. picking, put-away, shipping, quality control, etc.
- Bins may be blocked from activity so that no movement can occur with a bin. The blocked movement can be specified to inbound, outbound, or all movement.
- Bin ranking is a method of prioritizing replenishment movements, picks, and put-aways indicating which bin should be picked, replenished or put-away.
- Each bin can be identified with its maximum cubage and weight. The combination of sizing from the inventory item card and the information on the bin record allows for the system to assign items being received to floating bins.

The setup and characteristics of one warehouse may vary from another warehouse within the same company. This allows for variation in customs, business processes, etc. from one warehouse to another.



Bin Contents with Applicable Warehouse Entries

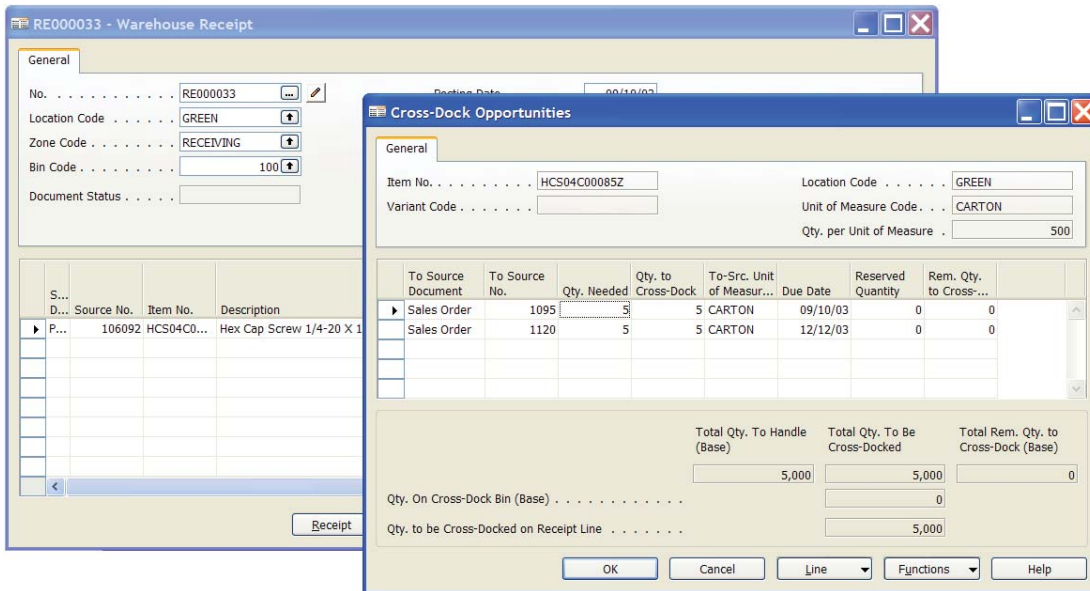
Supply Chain - Warehouse Management

Warehouse Activity

All the activity that occurs within the warehouse including receiving, put-away, picking, shipping, moving and transferring are included within the warehouse activity sector, and completely automates these activities.

Although paper may still be used, the Warehouse Management System can eliminate the flow of paper from the back office to the warehouse. As the required activities (picking, receiving, etc) are released they are available to the WMS and can be controlled by warehouse staff. The activities themselves can be accomplished through reports printed in the warehouse or through Automatic Data Collection System (ADCS) using RF or wireless hand-held data terminals. As the activities proceed through the various stages, the status is available to the sales and purchasing personnel who need to be able to see what stage in the warehouse handling process a particular order has reached. Selection criteria by activity are very flexible. For example, picks can be selected by customer, item, zone and bin, or due date.

The system automates the cross-docking process by identifying received items which can be moved to the shipping area.



Warehouse Receipt Showing Cross-Dock Opportunities

Cycle Counting

The user can define the number of cycle counts per year based on the movement and value of the inventory items. Or, the cycle counts can be defined based on a bin series or on specific items or item classes. The system records the last physical inventory counting period and calculates the next counting period. The frequency of the count is a part of the inventory item record.

The system automates the cross-docking process by identifying received items which can be moved to the shipping area.

Features:

- Automates all your warehouse activities
- Operate with printed forms or with wireless and RF hand-helds
- Increases the efficiency and productivity of your warehouse personnel
- Interfaces with all applicable NewVision modules
- Sales and back office personnel have visibility of order status